



# Pat Mayse Lake, Texas

**U.S. ARMY CORPS OF ENGINEERS**

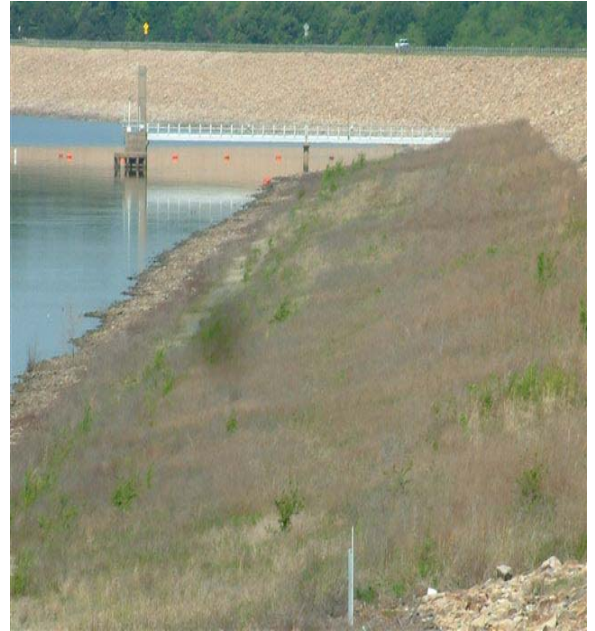
**FACT SHEET as of date February 6, 2012**

**BUILDING STRONG®**

**AUTHORIZATION:** Pat Mayse Lake was authorized by the Flood Control Act of 1962.

**TYPE OF PROJECT:** Flood damage reduction, water supply, recreation, and environmental stewardship.

**PROJECT PHASE:** O&M



**CONGRESSIONAL INTEREST:** Senators Cornyn and Hutchison, TX; Representative Hall, TX-4.

**NON-FEDERAL SPONSOR:** N/A

**BACKGROUND:** Pat Mayse Lake is located 1.5 miles southwest of Arthur City and 12 miles north of Paris, in Lamar County, Texas. The dam consists of an earth-filled embankment about 7080 feet long. The uncontrolled spillway is located in a saddle about 1400 feet right of the right abutment. Pat Mayse Lake provides flood control for the Sander's Creek drainage between Arthur City and the Red River, but is more important as the major water supply for Paris, Texas. It has been instrumental in the attraction of major industry to Paris such as Campbell Soup and Kimberly Clark. At conservation pool the lake covers 5940 acres.

**STATUS:** FY 2011 activities included routine scheduled operations and maintenance activities at the project. There were no major maintenance contracts awarded at Pat Mayse Lake in FY 2011.

**ISSUES:** None.

<b><u>FINANCIAL SUMMARY (\$):</u></b>	<b><u>O&amp;M</u></b>
Federal Cost Estimate	N/A
Non-Federal Cost Estimate	N/A
Total Project Cost	N/A
Allocation thru FY 2010	N/A
ARRA Funding	0
Allocation for FY 2011	\$ 992,000
Allocation for FY 2012	\$1,187,000
President Budget FY 2013	\$1,148,000
Amount That Could Be Used for FY 2013	\$1,148,000
Balance to Complete	N/A

**SCHEDULE:**

**FY 2012 Scheduled Work:** The current FY 2012 Budget will be used for routine operations and maintenance activities at the project.

**FY 2013 Budget:** The FY 2013 President's budget will be utilized for routine operations and maintenance activities at the project.

**COMPLETION:** N/A. Operating project.

**For more information** regarding Pat Mayse Lake, contact Chris Lynch, Lake Manager, at (580) 326-3345 or Christopher.Lynch@usace.army.mil.

# PROJECT MAP PAT MAYSE LAKE, TEXAS

## PAT MAYSE LAKE PUBLIC HUNTING AREA

